



Nut Locking Plates
for clamping arm nuts of swing clamps
Approach for in-house production



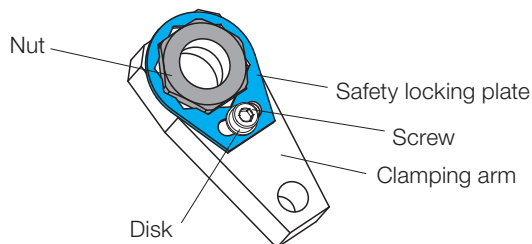
Description

The nut locking plates prevent twisting or loosening of the fixing nut of the clamping arm.

Important: To allow rotation of the clamping arm on the piston rod, the fixing nut has to be tightened by means of the torque indicated in the chart.

For more information on mounting of the clamping arm, see operating instructions of the corresponding swing clamp.

The threads in the clamping arm for the fixing screws have to be provided by the customer.

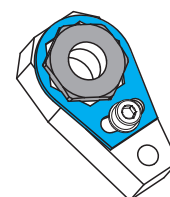
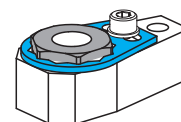
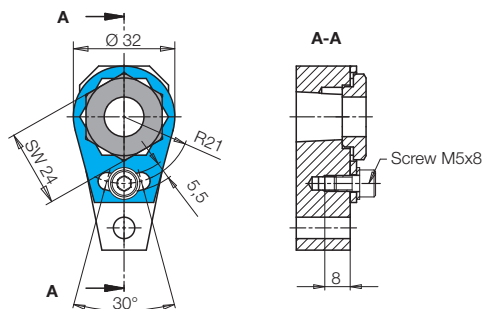
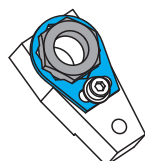
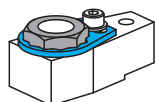
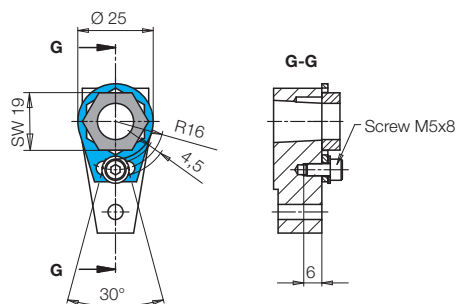


Swing clamps 1853XXX

		Part no.
Nut	M12 x 1.5	3302 115
Tightening torque	12 Nm	
Socket head cap screw	M5 x 8	3301 514
Tightening torque	6 Nm	
Disk	ISO 7089-5	3300 079

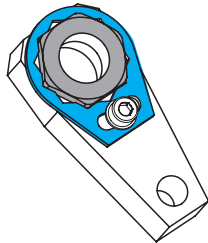
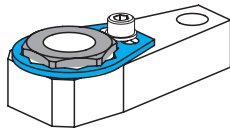
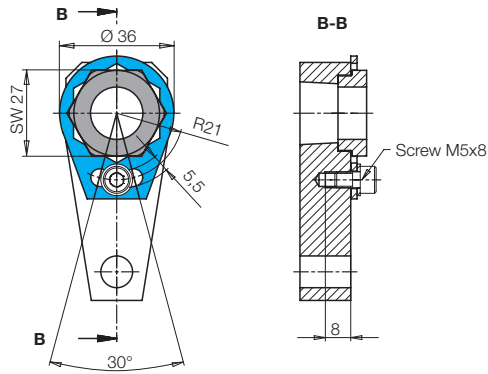
Swing clamps 1843XXX

		Bestell-Nr.
Nut	M14 x 1.5	3527 092
Tightening torque	16 Nm	
Socket head cap screw	M5 x 8	3301 514
Tightening torque	6 Nm	
Disk	ISO 7089-5	3300 079



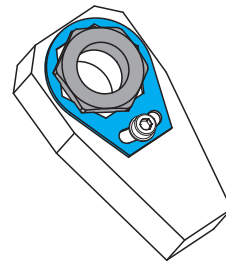
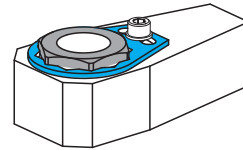
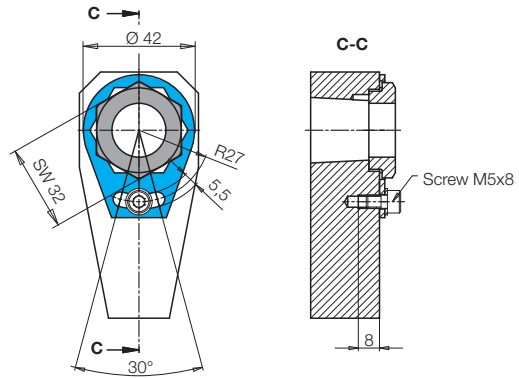
Swing clamps 1893XXX, 1844XXX and 1854XXX

		Part no.
Nut for 1893 and 1844	M18 x 1.5	3527 014
Nut for 1854	M18 x 1.5	3301 663
Tightening torque	30 Nm	
Socket head cap screw	M5 x 8	3301 514
Tightening torque	6 Nm	
Disk	ISO 7089-5	3300079



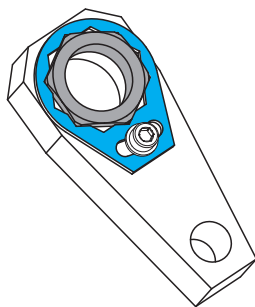
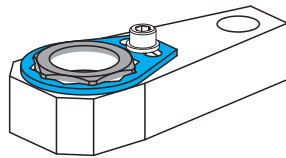
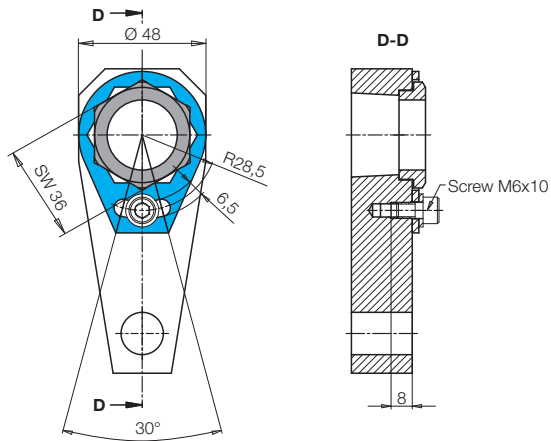
Swing clamps 1845XXX

		Part no.
Nut	M20 x 1.5	3527 099
Tightening torque	42 Nm	
Socket head cap screw	M5 x 8	3301 514
Tightening torque	6 Nm	
Disk	ISO 7089-5	3300079



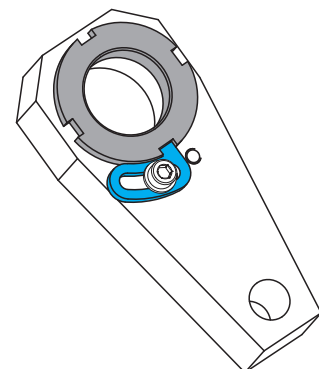
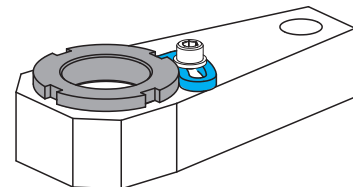
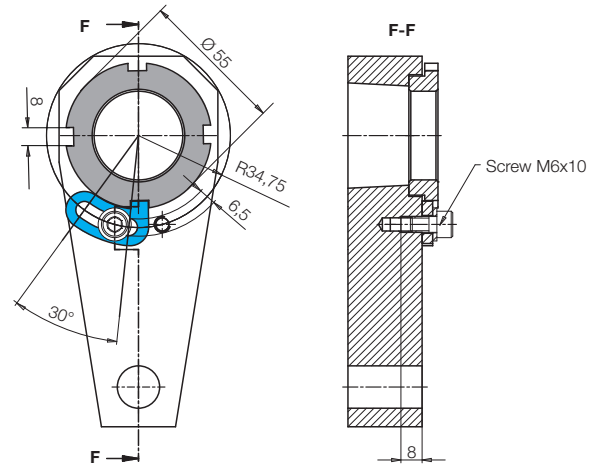
Swing clamps 1895XXX, 1846XXX and 1856XXX

		Part no.
Nut for 1895 and 1846	M28 x 1.5	3527015
Tightening torque	90 Nm	
Nut for 1856	M24 x 1.5	3302104
Tightening torque	62 Nm	
Socket head cap screw	M6 x 10	3300223
Tightening torque	10 Nm	
Disk	ISO 7089-6	3300081



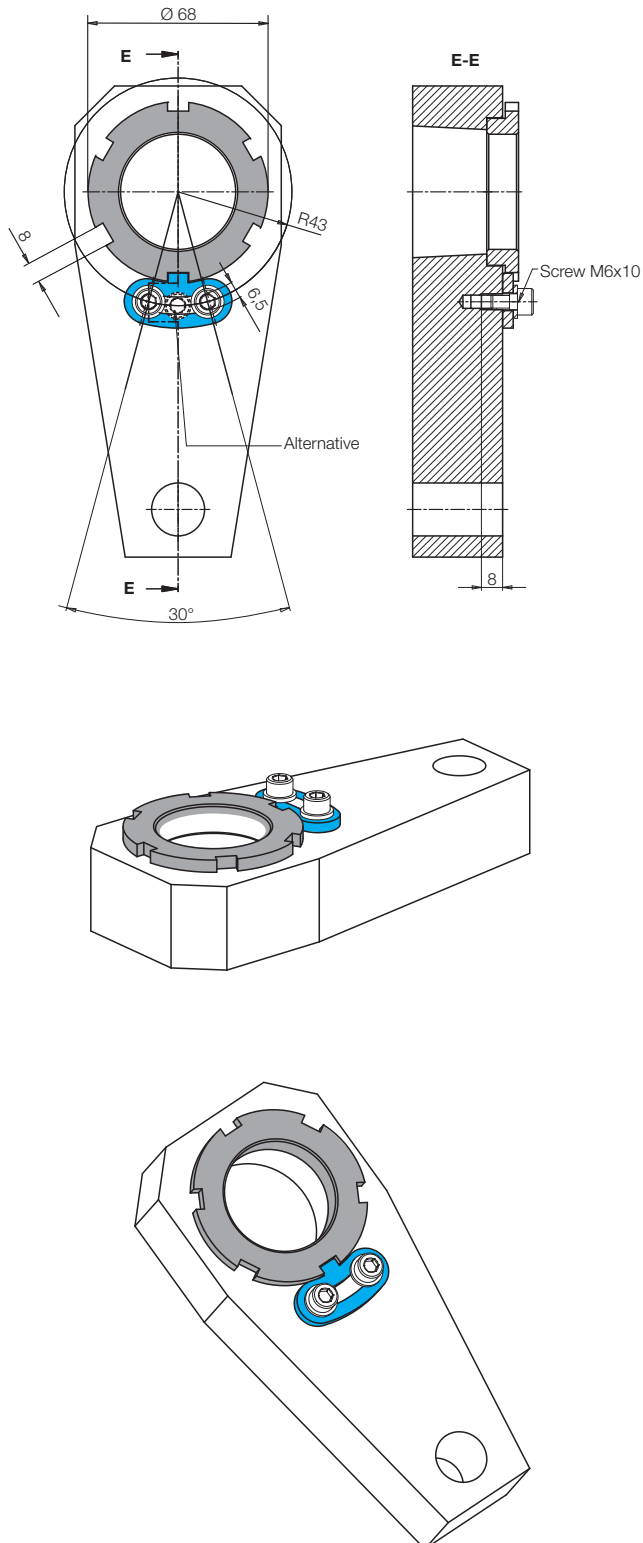
Swing clamps 1896XXX

		Part no.
Nut DIN 1804-W8	M35 x 1.5	3527048
Tightening torque	160 Nm	
Socket head cap screw	M6 x 10	3300223
Tightening torque	10 Nm	
Disk	ISO 7089-6	3300081



Swing clamps 1897 XXX

		Part no.
Nut DIN 1804-W8	M45 x 1.5	3527 016
Tightening torque	280 Nm	
Socket head cap screw	M6 x 10	3300 223
Tightening torque	10 Nm	
Disk	ISO 7089-6	3300 081



Swing clamps 1857 XXX

		Part no.
Nut	M30 x 1,5	3302 139
Tightening torque	110 Nm	
Socket head cap screw	M6 x 10	3300 223
Tightening torque	10 Nm	
Disk	ISO 7089-6	3300 081

